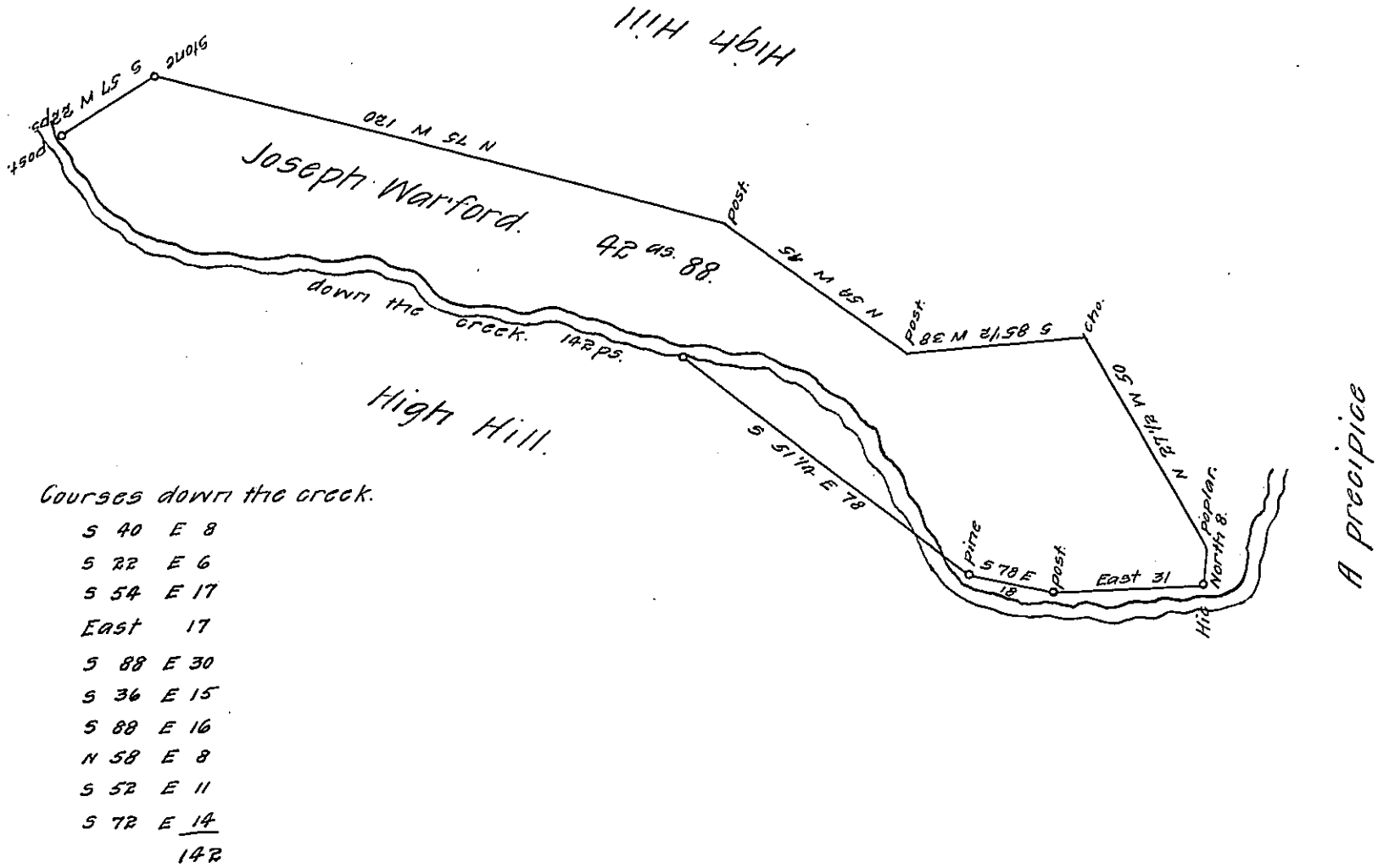


FORM NO 1.



Courses down the creek.

- S 40 E 8
- S 22 E 6
- S 54 E 17
- East 17
- S 88 E 30
- S 36 E 15
- S 88 E 16
- N 58 E 8
- S 52 E 11
- S 72 E 14
- 142

A draft of a tract of land situate on the West Branch of
 Conloway Creek about 1 mile above Warfordsburg in Bethel
 township Bedford county containing Forty two acres & eighty
 eight perches & allowance of six per cent for roads &c.
 Surveyed for Joseph Warford on order No. 1936 dated the
 24th day of November 1766.

James O'Connor, D.S.

~~To Gabriel Hiester Esqr S.G.~~

~~To Jacob Spangler Esqr S.G.~~

To Gabriel Hiester Esqr S.G.

IN TESTIMONY that the above is a copy of the original remaining on file in
 the Department of Internal Affairs of Pennsylvania, made
 conformably to an Act of Assembly approved the 16th day of
 February, 1833, I have hereunto set my Hand and caused
 the Seal of said Department to be affixed at Harrisburg,
 this twenty-seventh day of July 1908.

Henry Horick
 Secretary of Internal Affairs.